



Medical Services in Digital Cities

Mei-Ling Hsu

Ditmanson Medical Foundation

Chia-Yi Christian Hospital



Chia-Yi Christian Hospital

Employees : ~3,000 Space : 140,000m² Beds : 1,074
Out-patient : ~4,000 visits/day Emergency : ~265 visits/day



Post Acute Care Center

保健照護中心-亞急性病房

在疾病復原期透過密集複健和護理照顧，縮短病患失能時間。



PostPartum Nursing Center

產後護理之家-坐月子中心

提供產婦坐月子期間傷口照護、月子餐。



Long-Term Care

保康園區-老人長期照顧中心

提供需長期照顧之長者護理、日常生活照顧。



Disabilities Center

再耕園-身心障礙綜合園區

提供身心障礙者福利諮詢、職業訓練、支持性就業服務。



Children's Early Healing & Development Center

晨光智能發展中心

提供身心障



Elderly Center

長青園-長青綜合服務中心

包含長青學苑、日間照顧中心、老人住宅。

參與 培力 長青
嘉義市長青園



Day Care Center

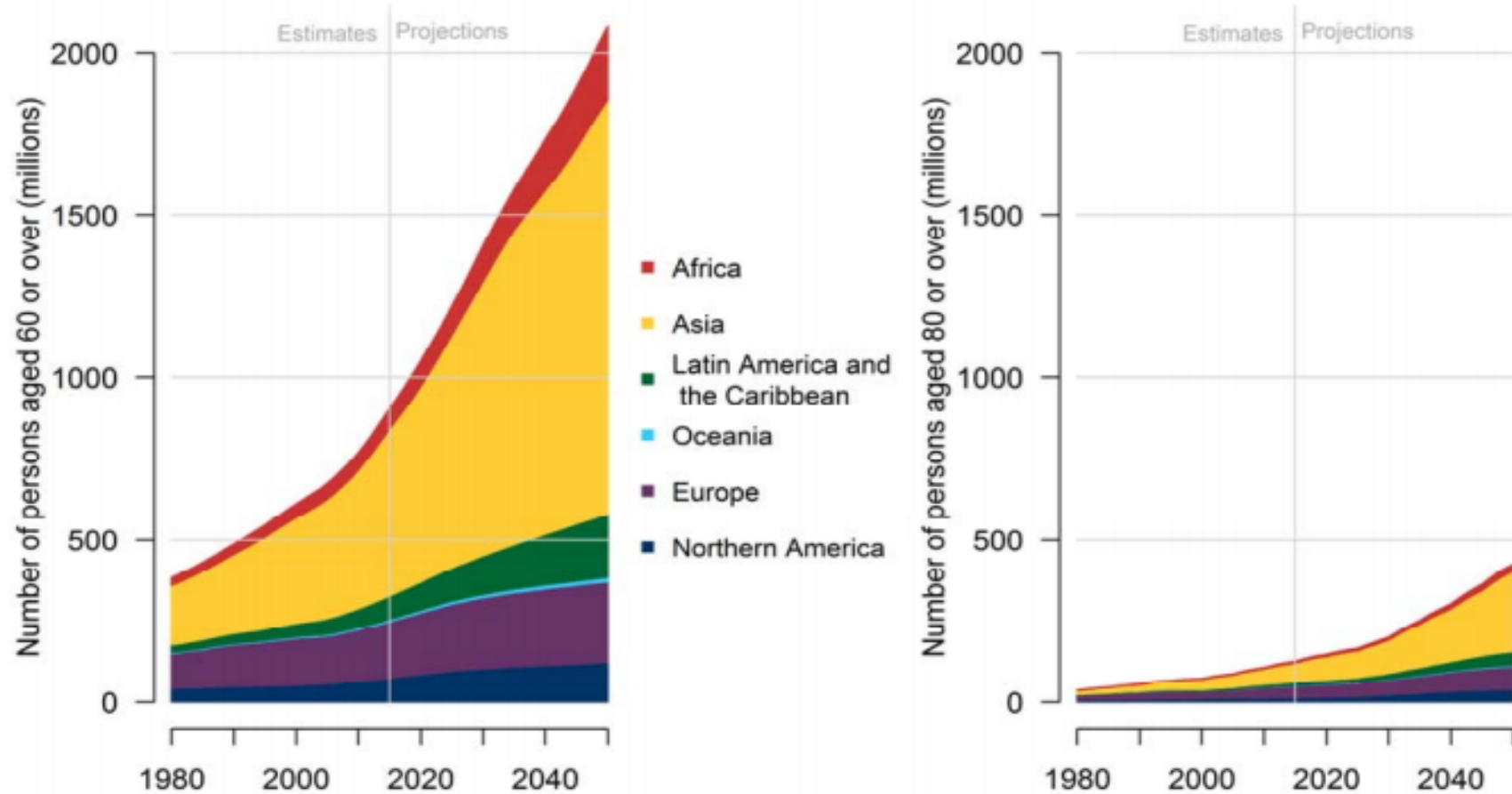
日安中心-失能老人托顧

提供失能老人日間照顧服務。



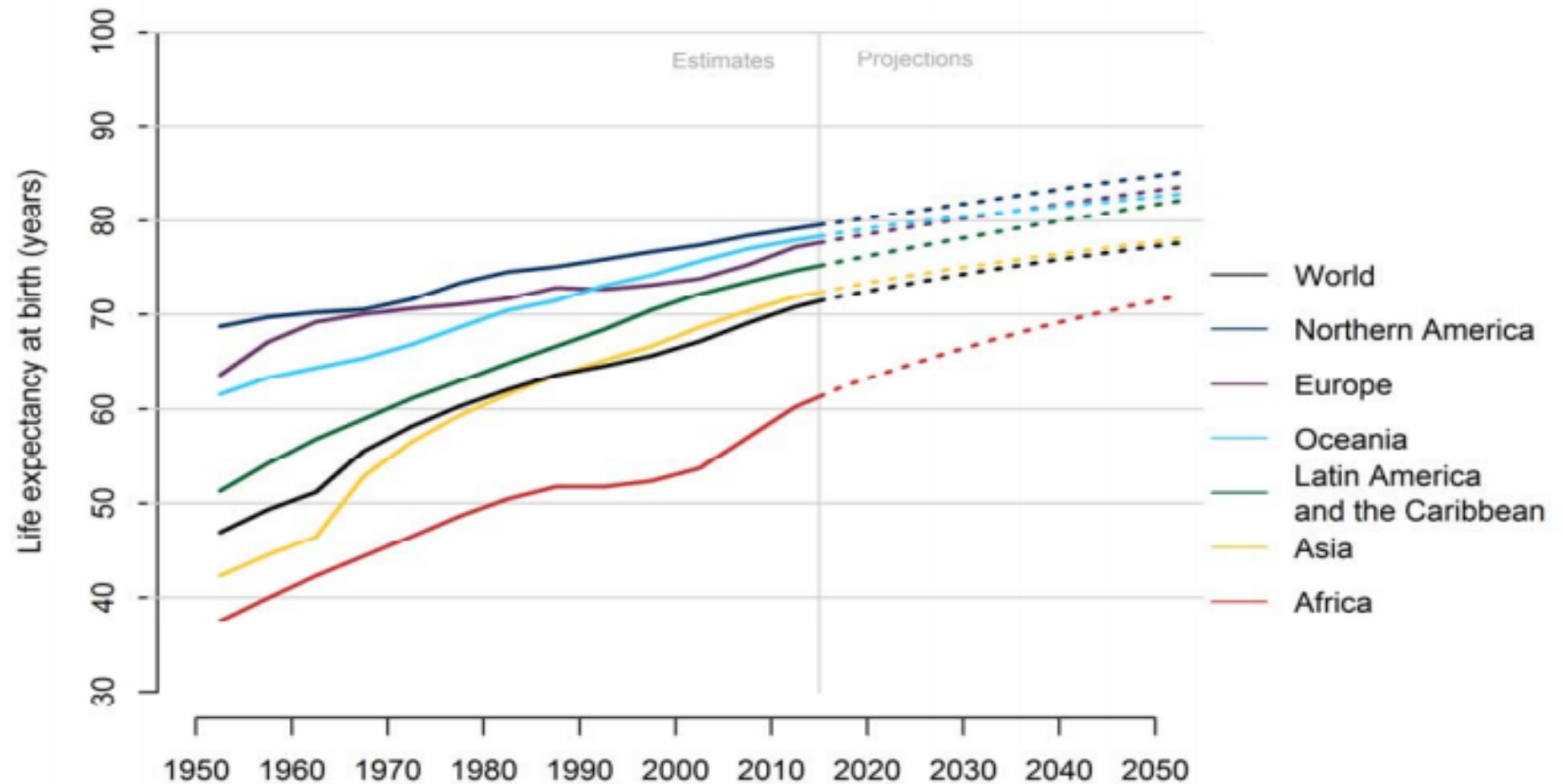
Silver Tsunami

Number of persons aged 60 years or over and aged 80 years or over for regions, 1980-2050



Data source: United Nations (2017). *World Population Prospects: The 2017 Revision*.

Life expectancy at birth for the world and regions from 1950 to 2050

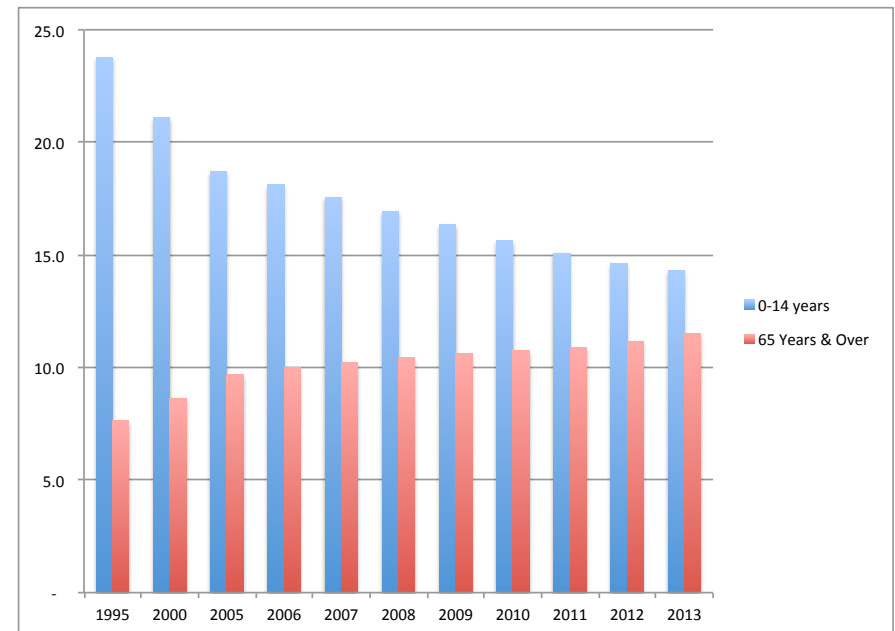


Data source: United Nations (2017). *World Population Prospects: The 2017 Revision*.

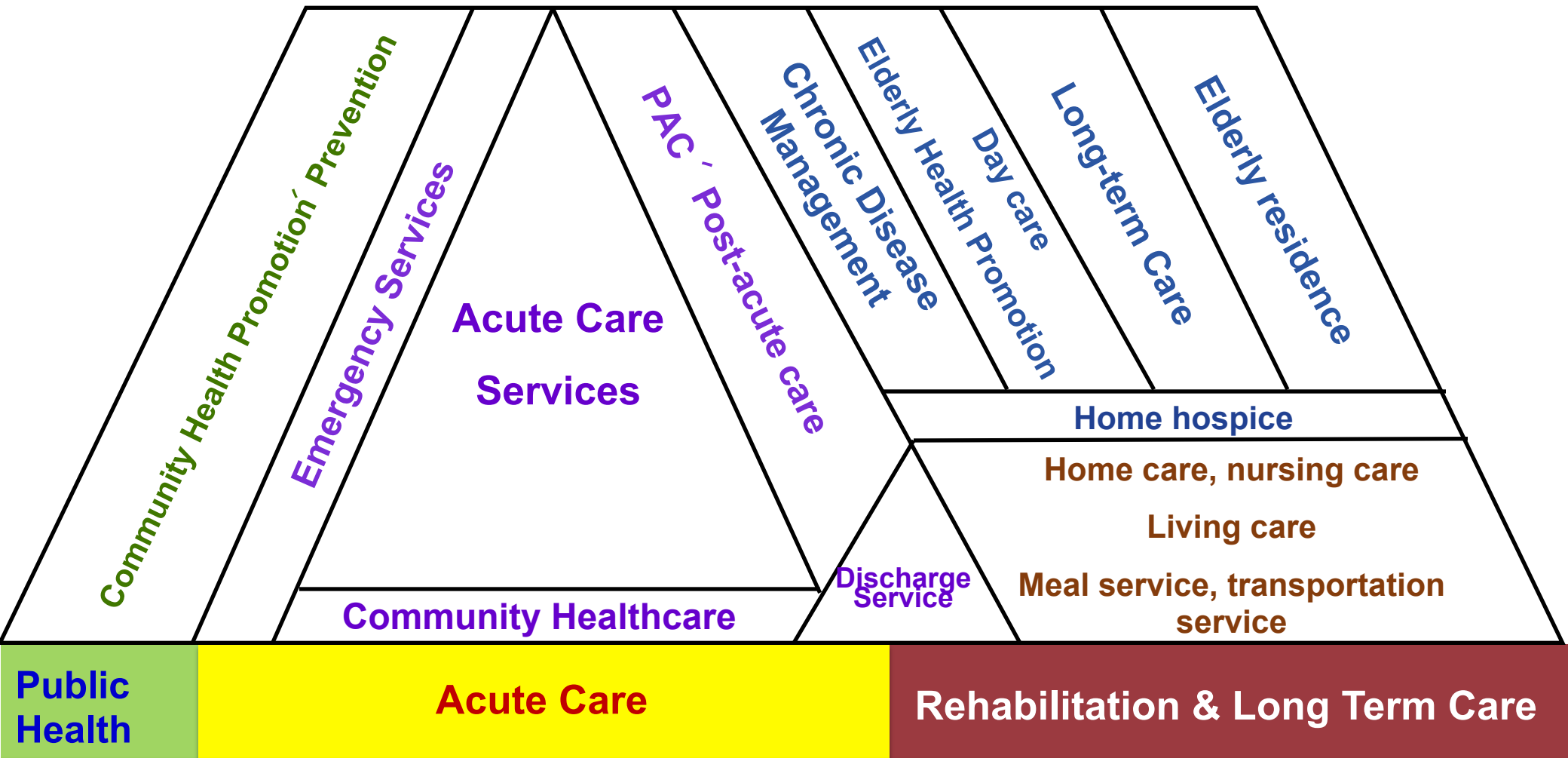
Healthcare Facts in Taiwan

- National Healthcare Insurance (1995)
- Life Expectancy (data of 2017)
 - Average : 80.4
 - Male : 77.3
 - Female : 83.7
- Aging Population

| | Median | >= 65 yrs |
|------|--------|-----------|
| 1990 | 28yrs | 6.5% |
| 2010 | 38yrs | 10.9% |
| 2040 | 53yrs | 31.1% |

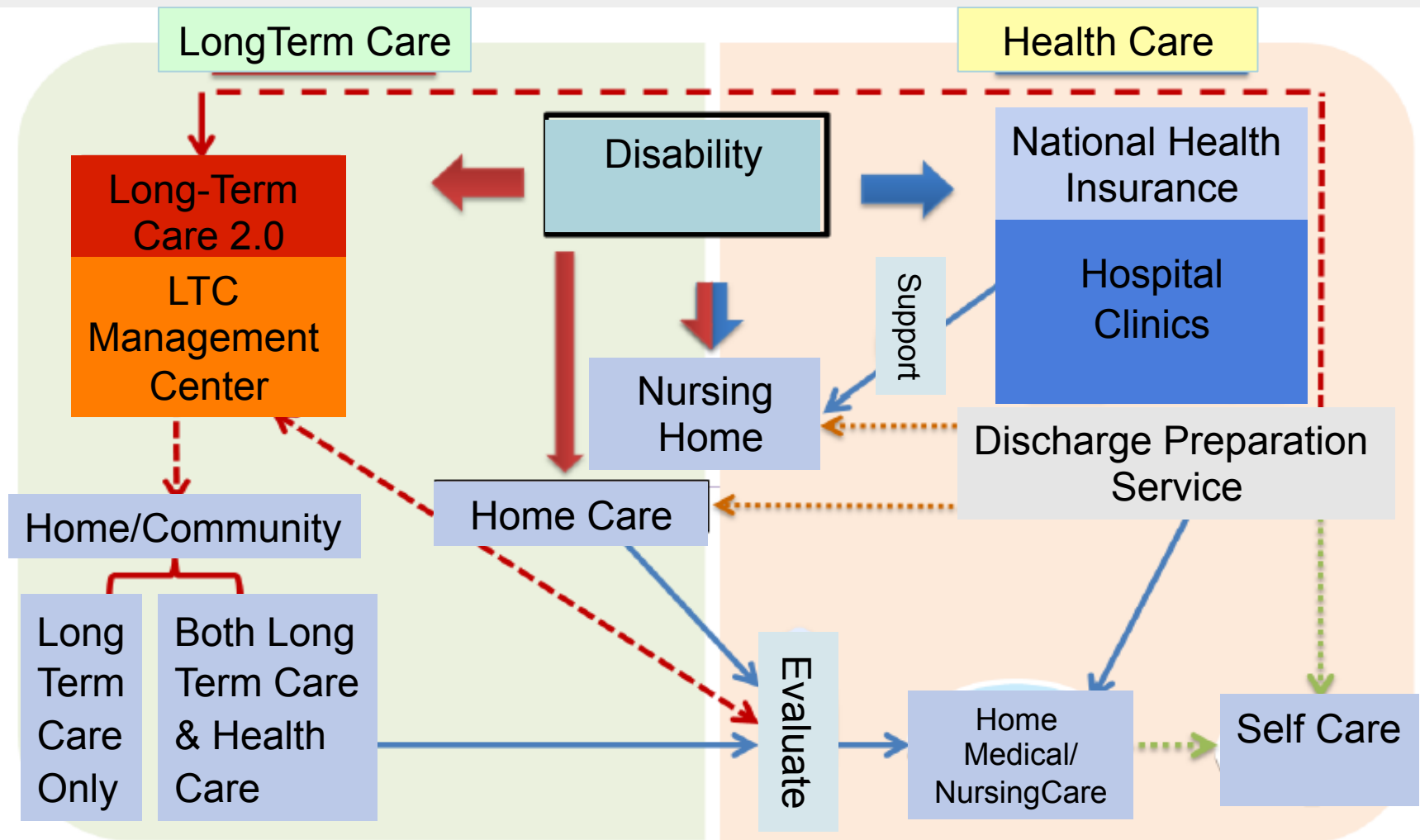


Integrated Care provided by CYCH



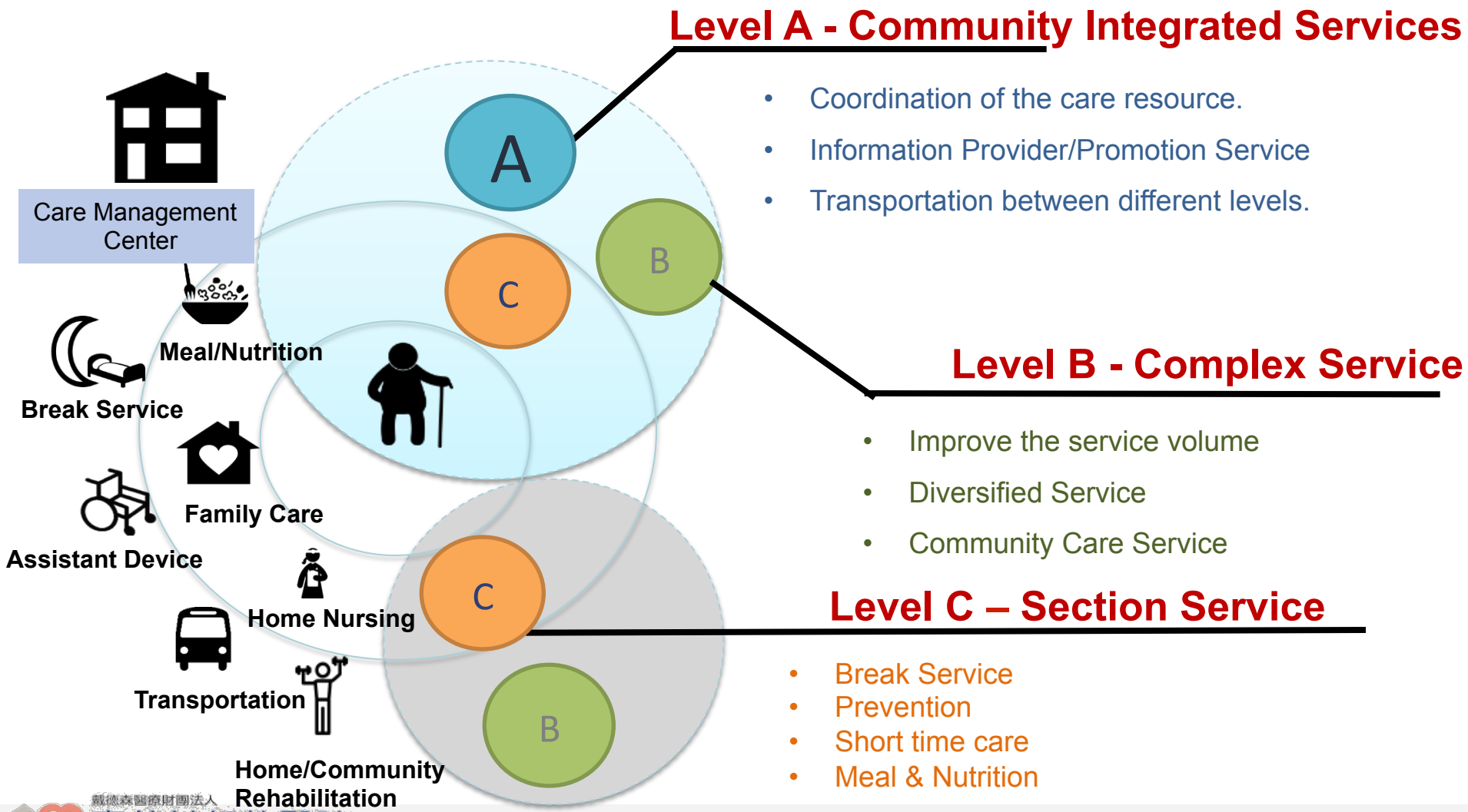
Health Care
Living Care Longterm Care

Care Process



Note :
→ Medical Care Transfer
→ Medical & Long term Care Connection
→ Getting well
→ Other Care

Community Care Model in Long Term Care 2.0



My Health Bank

Login and Apply

- 1 Citizen Digital Certificate
- 2 Card Reader

Login Next Day

Download One Year Data

Download the Zip File

Unzip the File by Password

衛生福利部中央健康保險署
NATIONAL HEALTH INSURANCE ADMINISTRATION.
MINISTRY OF HEALTH AND WELFARE

全民健保健康存摺系統 / MY HEALTH BANK

>>身分證號

>>自然人憑證密碼

請插入自然人憑證後按確認

確認





最近一次就醫紀錄



我的行事曆



貼心叮嚀



生理量測



肝癌風險預測



西醫門診資料



Conclusion

- **Interoperability**
 - Standard format, Open data, Security issue, API
 - Medical, Care, Pharmacy, Transportation, Meal, Assistive device...
- **Data**
 - Data Collection
 - Relate different data sources
- **4Ps : Preventive、 Predictive、 Participatory and Personalized**
→ Better Health
- **IoT + Cloud + Mobility + Big data + AI**

THANK YOU!

